

Download the two databases located at:

<http://cseserv.engr.scu.edu/studentaccounts/ethicstechnologydata/>

The [EthicsTechnologyLinks.mdb](#) database contains all of the links entered as of the file date. I will update this file occasionally.

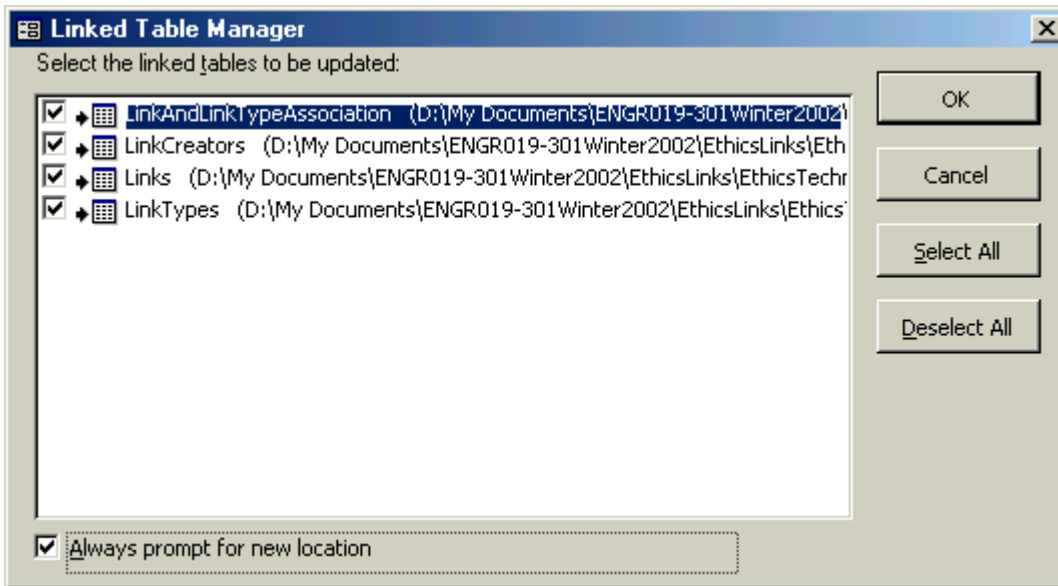
The [EthicsLinkDisplay.mdb](#) is the database you should work from.

You will need to re-link the EthicsLinkDisplay database to the EthicsTechnologyLinks database on your computer.

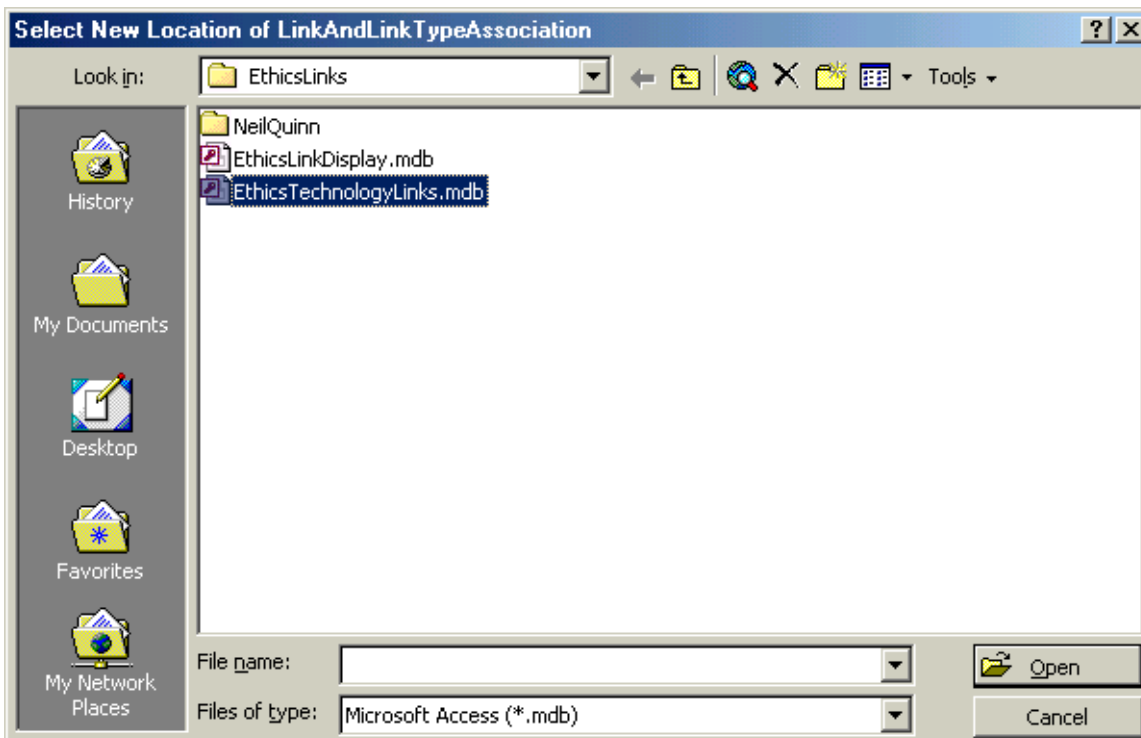
The proper method of relinking your EthicsLinkDisplay database to the EthicsTechnologyLinks data follows:

Open the EthicsLinkDisplay database in MS_Access. Go to “Tools – Database Utilities – Linked Table Manager”

The following window should open and you should “Select All” and check the box “Always prompt for new location”



Click on OK. Select the location where the EthicsTechnologyLinks.mdb file is located.



Select the file and click on Open.

The following window should appear if you were successful.



You are now ready to begin creating queries that will display the data.